



# staying CONNECTED

A NEWSLETTER FOR THE ALUMNI AND FRIENDS OF MINNESOTA WEST COMMUNITY & TECHNICAL COLLEGE

## WINTER 2019 IN THIS ISSUE

-  From the President
-  Recognition
-  Program Updates
-  Annual Report
-  Philanthropy Corner
-  Alumni Updates
-  Telescope Donation

The Minnesota West Foundation is a private non-profit, 501(c)(3) tax exempt organization.

The Minnesota West Foundation believes in affordable and accessible educational opportunities for students. Because of this belief and commitment to education, the Minnesota West Foundation provides funding for scholarships and development opportunities for students attending Minnesota West Community and Technical College.

# MINNESOTA WEST'S REGIONAL IMPACT

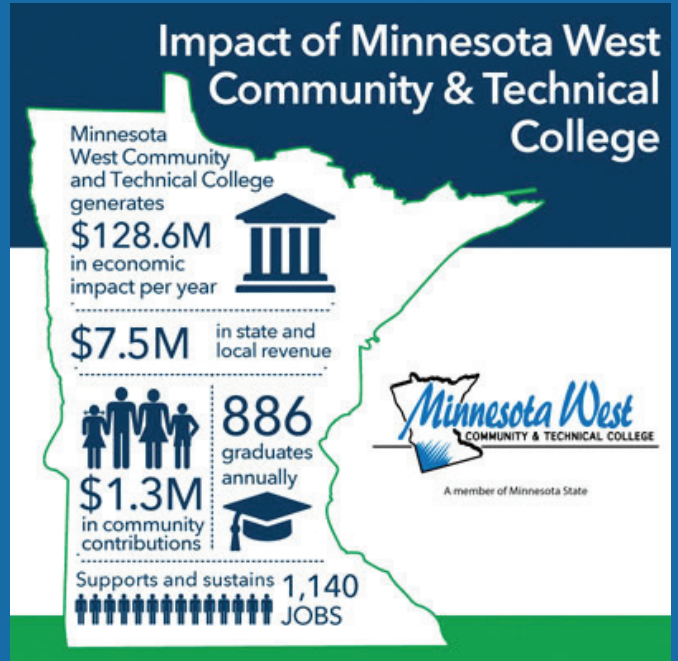
An analysis conducted by consulting firm Parker Philips estimates the contribution of Minnesota West Community & Technical College to the regional economy to be \$128.6 million and 1,140 jobs.

The analysis considered the direct spending on operations, pay, benefits, and capital projects by Minnesota West and the estimated increase in demand for goods and services in industry sectors that supply or support the college. The study also measured the effect of student spending and the induced effect of increased household income.

A key result of this activity is that Minnesota West supports and sustains 1,140 jobs including direct employment by the college, as well as indirect and induced jobs created by supply and equipment vendors, contractors, and laborers for the construction and renovation of facilities, and jobs created in the community at hotels, restaurants, and retail stores in support of the college's faculty, staff, students, and visitors.

The study also calculated tax revenues generated by this level of economic activity, including sales, property, personal income, and corporate income taxes. The study concluded that Minnesota West generates about \$7.5 million in tax revenues for state and local government.

The study further estimated the value of the increase in productivity that the degrees awarded by Minnesota West yield throughout the careers of the graduates. Assuming a 40-year work life, the education received by these graduates will yield additional state income of \$2.5 billion (future value, discounted and adjusted to account for such factors as foregone income while attending school and outmigration).



"Minnesota West makes a long-term contribution to the regional economy with every graduating class because the productivity improvements from higher education last for the worker's entire career," said Dr. Terry Gaalswyk, President of Minnesota West.

Statewide, all Minnesota State operations, including all seven state universities and 30 community and technical colleges, plus the spending of its faculty, staff, and students, had a total economic contribution of \$8.0 billion. This activity generated an estimated 67,717 jobs in the state.



# From the **PRESIDENT**

Ufta! It's a good ol' fashioned winter here in southwest Minnesota, and the winter blues can easily set in. However, each day I encounter students who persevere in the face of personal challenges. Each day, I witness faculty and staff focused on service to our students. Each day, I learn of students whose financial duress has been reduced through the generosity of our donors. Each day, I hear from our industry partners and healthcare providers regarding how much they value the talents of our graduates. These are what provide me with energy - the personal student stories, the commitment of our faculty & staff, the support of our alumni, and the success of our graduates - Each Day!

Recent news regarding the economic impact of our talented graduates and the operations of Minnesota West also provides me with great assurance. As you may have already read, Minnesota State's system office engaged an independent consultant to assess the financial impact of our college. Minnesota West's highly-skilled graduates and college operations generate \$128.6 million

annually in economic impact. Each day, this impact of our college's purpose touches virtually every corner of our regional economy including agriculture, healthcare, education, hospitality, manufacturing, child day care services, and retail.

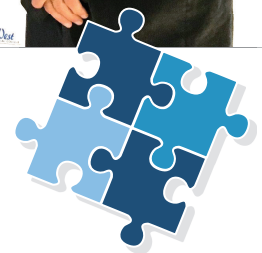
Of course, winter will give way to spring, and we will quickly transition into "graduation mode." But until that great celebration, each day, the cheers of students at an athletic event, the sights of students as they climb our powerline poles, the teaching talents of our faculty, the commitment of our staff, and the support of our alumni will continue to provide me great energy and assurance.

Thank you for your care of Minnesota West and all that we do; your support is critical in the success of our students - Each Day!

Sincerely, Your President



Terry Gaalswyk



## Recognition

### ONLINE EXCELLENCE

Minnesota West was recently ranked in the top 10 percent of all online colleges nationwide for its leadership in distance education. The ranking from BestColleges.com earned the college a School of Distinction designation and a bronze standing among award winners. Minnesota West was one of only five community colleges receiving this honor.

Minnesota West was also ranked in the 2019 Most Affordable Online Colleges for Information Technology. This ranking, provided by SR Education group, recognizes colleges across the nation that are working to provide economical options with fully online offerings. Minnesota West is ranked 18 in the top 25 of schools across the nation.

### MILITARY FRIENDLY SCHOOL

Minnesota West Community & Technical College was once again named a Military Friendly School for 2019 by VIQTRY, an organization focused on connecting the military community to civilian opportunities. The college was also ranked second in the nation among small community colleges.

According to VIQTRY, the Military Friendly® Schools list has come to set the standard for higher education institutions to provide the best opportunities for veterans and their spouses. Institutions earning the Military Friendly® School designation were evaluated using both public data sources and responses from a proprietary survey completed by the school.





# PROGRAM UPDATES



## LAMB & WOOL GRADUATION

Minnesota West's Lamb and Wool program held its annual Fall Kickoff meeting on our Pipestone, MN campus in November, providing the opportunity for Lamb and Wool students to network with each other and with Minnesota West faculty and administration. Instructors awarded diplomas and recognized an Outstanding Producer as well as students who have been involved in the Lamb and Wool program for 20

years. The Lamb and Wool program at Minnesota West is a sheep management education/consulting program with the goal of helping sheep producers increase income and profit through the production of quality lamb and wool. They do this by maximizing the profit per ewe and by realizing the full potential of all sheep through use of modern management practices, new technologies, and new approaches to marketing.

## SOCIOLOGY INSTRUCTOR RECEIVES AWARD

Minnesota West Sociology instructor, Dr. Jay Vargas, attended the NEXUS: Liberal Arts Research Symposium in Brownsville, Texas where he and his classmates presented "Decoloniality: From Theory to Praxis. Nepantlerxs Comprometidxs con el Conocimiento." Jay and his peers were awarded Most Outstanding Graduate Student Presentation at the Symposium! This presentation was part of Dr. Vargas's sabbatical work during spring semester 2018.



DR. JAY VARGAS

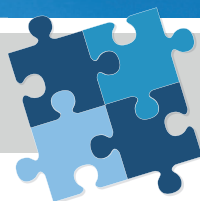
## NURSING PROGRAM PROSPERS IN THE NEW YEAR

The Minnesota West Nursing program continues to strengthen its program through funding and collaboration in 2019:

- The Minnesota West Nursing program has secured \$48,000 in funding through two new grants: 1) the Culturally Relevant Teaching Praxis in Nursing Education grant in collaboration with Southwest Minnesota State University (SMSU) and Minnesota State University Mankato for \$10,000, and 2) the Foreign Born Nursing Student Success grant for \$38,000.
- Nursing students in the Minnesota West Professional Nursing (RN) Associate Degree Program are provided with an expanded application timeframe to the SMSU RN to BSN Program. This will allow Minnesota West nursing students to apply to the SMSU BSN program at the beginning of their Minnesota West Professional Nursing (RN) Associate Degree Program.
- Renovation of the nursing labs on the Pipestone Campus is currently in process along with \$10,000 in new equipment for clinical experience and virtual simulations.
- Minnesota West hosted the MN Board of Nursing and the Accreditation Commission for Education in Nursing (ACEN) in February 2019.



# ANNUAL Report



## BOARD OF DIRECTORS

Dear Alumni and Friends of Minnesota West,

On behalf of the staff and Board of Directors of the Minnesota West Foundation, I am pleased to present this annual report for fiscal year 2018. This report recognizes the many supporters of the students and programs at Minnesota West, and it provides a snapshot of our Foundation's fiscal health.

2017-18 was a solid year for the Foundation. We awarded more than 100 scholarships totaling almost \$100,000, and we grew our net assets by over 6% from the previous fiscal year. We also received over \$400,000 in equipment donations, which went toward strengthening our college programs.

The purpose of the Minnesota West Foundation continues to be to support the mission of Minnesota West. We do that through funding for scholarships and development opportunities for students, and through support of our college programs. Although we are a small Foundation in comparison to what you might find at a four year university, we have fervent supporters and a growing, vibrant college that we are honored to be a part of.

We hope you enjoy the newsletters, and we thank you for your continued support of Minnesota West!

Sincerely,

Kevin Paulsen, Board Chair



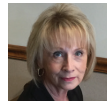
**KEVIN PAULSEN**  
Pipestone (President)



**RICK DALRYMPLE**  
Worthington,  
(Vice Chair & Secretary)



**NICOLE PAULSEN**  
Pipestone (Treasurer)



**LINDA DEGRISELLES**  
Granite Falls



**CLIFF VRIEZE**  
Jackson



**SALLY VOGT**  
Canby



**HARRY DAVIS**  
At-Large

## STAFF

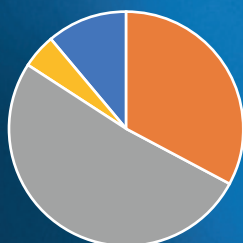


**MICHAEL VAN KEULEN**  
Executive Director

### Summary Statement of Financial Activities for the year ending June 30, 2018

#### INCOME

Cash Contributions	\$271,882	(32.99%)
Non Cash Contributions	\$422,952	(51.32%)
Net Investment Income	\$38,762	(4.70%)
Other Income	\$90,499	(10.98%)
<b>Total Income</b>	<b>\$824,094</b>	

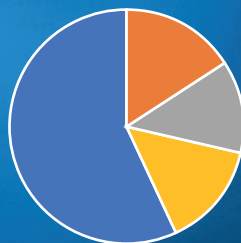


#### INCOME

- Net Investment Income
- Cash Contributions
- Other Income
- Non Cash Contributions

#### EXPENSES

General Operating	\$118,112	(15.88%)
Student Scholarships	\$95,440	(12.84%)
Program and College Support	\$107,061	(14.40%)
Non-Cash College Support	\$422,952	(56.88%)
<b>Total Expenses</b>	<b>\$743,565</b>	



#### EXPENSES

- General Operating
- Student Scholarships
- Program & College Support
- Non Cash College Support

The complete 2018 financials for the Minnesota West Foundation can be found at [www.mnwest.edu/foundation](http://www.mnwest.edu/foundation)

**Net Assets - 6/30/2017**      **\$1,165,514**  
**Net Assets - 6/30/2018**      **\$1,236,860**

# Donors

**Fiscal Year 2018 Donors to the Minnesota West Foundation (7/1/17 – 6/30/18)**

**We thank the following donors for their generous support of the Minnesota West Foundation!**

Great care has been taken to ensure the accuracy of this list. If you see any discrepancies, please contact the Minnesota West Foundation.  
This list includes both cash and non-cash donations (non-cash are in italics).

## **FRIENDS**

### **(\$1 - \$99)**

American Sheep  
Avis Freitag  
Barry Nienhaus  
Bart & Peggy Cavanaugh  
Blake Meshke  
Bonnie Habeck  
Bruce Amundson  
Carolyn Weber  
Catharine McCann  
Deborah Bierbaum  
Dennis Hampel  
Donna Hage  
Dorothy Sietsema  
Douglas & Talana Mathiowetz  
Janet Full  
Jason and Jennifer Braun  
Jason Ourada  
Jodi Christensen  
John Olson  
Karen Miller  
Karsten Piper  
Kevin & Betty Oeltjenbruns  
Kile Behrends  
Larry & Dede Burlingame  
Laurie Johnson  
Leola Weets  
Lisa Smith  
Marco  
Mark Anderson  
Michael and Stacy Chaffee  
Minka Farm, LLC  
Murlaine Rieger  
Pamela Davids  
Paulette Wiesen  
Peter & Jeanne Suby  
Randy & Theresa Holinka  
Rebecca Weber  
Richard and Dianne Dalrymple  
Rita Christianson  
Riverside Stock Farms Inc.  
Robert & Bonnie Bents  
Robert & Margaret Willardson  
Robert and Jane Benson  
Robert Nervig  
Roger Knudson  
Ryan Gravenhof  
Scott Anderson  
ScuttleShip Farm  
Shirley Frisch  
Travis Ling  
William and Phyllis Henderson

## **SUPPORTERS**

### **(\$100-\$499)**

Cheri Fjermestad  
Amber Luinenburg  
Angela Hoffman  
Brad Christensen  
Brian Johnson  
Brian Winsel  
*Casey's of Sherburn, MN*  
Cody Cannon  
Dan Roos  
Debra and John Oberfeul  
Denise Sik  
Dr. Rita Miller  
Farmers & Merchants State Bank Alpha  
Gary & Marie Hoffmann  
Gary Bice  
Greta Pullman  
Jack Talley  
Jackie Lage  
John and Julie Bush  
John Iverson  
Jon Orlando Vigi  
Joyce Burns  
Kevin Paulsen  
Kip Thorson  
Kirby Baumgard  
Le Lucht  
Leslie Bauman  
Linda & Burdette DeGriselles  
Lori Alderson  
Lynn Vanderplaats  
Mara Beth Van Orman  
Martin Marietta Materials  
Micha Armitage  
Michael & Tami Wesselink  
Michael DeVries  
Michael Dierks  
Michael and Donna Van Keulen  
North Star Mutual Insurance  
Pamela Jensen  
Paul Lanoue  
Paula & Jeff Orthaus  
Peter Girard  
Raymond Louwagie  
Richard & Dianne Dalrymple  
Roger & Marlyn DeVries  
Rolf Mahlberg  
*Runnings of Canby, MN*  
Sally Vogt  
Sandi Mead  
Scott and Theresa Bennett  
Sharon Balster  
Suzanne Iverson  
Terry Peterson  
Thomas Williams  
Tim Buysse

Triumpf State Bank  
Valerie Klumper  
William Roney and Joanne Kelley

## **BENEFACTORS**

### **(\$500-\$999)**

Alberta Lamb Producers  
Alliant Energy  
Annie Magnuson  
Arthur Frame  
Bank Midwest  
Bruce Peterson  
Canby Farmers Grain Co.  
Clifford & Karen Vrieze  
Compeer Financial Services  
Daily Globe  
Dawn Regnier  
Deb and Greg Peterson  
DeMuth Insurance Agency  
Farmers State Bank of Trimont  
Federated Rural Electric Trust  
First National Bank of Lakefield  
Fulda Area Credit Union  
Gerald and Marja Norris  
Gerald Parks  
Jeff and LouAnn Williamson  
Jodi Landgaard  
Joel Kunze  
Lucht Law Offices  
Minnesota Elks Association  
Minnesota Rural Electric Association  
MN Rural Electric Fishing Tournament  
*Muth Electric Inc.*  
Odin State Bank  
Paul Strom  
Premier 1 Supplies LLC  
Ronald Schwint  
Rotary Club of Canby  
Roxanne Hayenga  
SD Retail Lumberman's Association  
Stearns Electric Association Trust  
Teresa Noyes  
Teresa Quintal  
Tom Wacholz

## **PATRONS**

### **(\$1,000-\$9,999)**

Ben and Meeta Baliga  
*Benco Electric*  
Blair and Julie Metzger  
Carr Family Foundation  
Connexus Energy  
Crow Wing Power  
Crystal Valley  
Dale & Joanne Carlson  
*Dean's Construction*

Deb Ladner  
Duke Energy  
East River Electric Power Coop  
*Fresco, Inc.*  
Gaylin Zeigler  
*Granite Falls Bank*  
Jeannette and Curt Olson Foundation  
Jody Olson  
Katherine Gallagher  
Lake Country Power  
*Lee-Noonen/Minnkota Sales*  
Linda Vos  
Minnesota Energy Center  
Myron Moser  
Northern Growers, LLC  
Otter Tail Power Company  
Peter Leto  
Sanford Health  
Southern District Dental Society  
Southwest Initiative Foundation  
Terry Gaalswyk  
Tim Hansen Memorial Ride  
*Tolomatic*  
Ziegler Cat

## **CHAMPIONS**

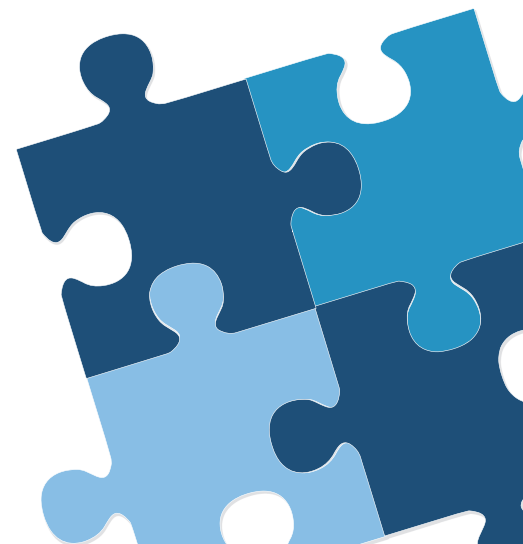
### **(\$10,000 - \$99,999)**

Appletree Institute  
*Chris Swoboda*  
Donna Meidinger  
*GSI Group*  
*Hartfiel Company*  
John W. Mooty Foundation Trust  
*RDO Equipment*  
*Redwood Electric Cooperative*  
*The Specialty Manufacturing Co.*

## **PLATINUM CHAMPIONS**

### **(\$100,000+)**

*Pipestone County Implement*



# Check out UPCOMING SPRING EVENTS at Minnesota West!



March 21st – **Canby Xtravaganza** – Highlighting Programs on the Canby Campus! Raffle all day; Burger Feed 11 am - 7 pm; Program Shadowing of Diesel Technology, Dental Assistant, Electrician and Wind Energy Technology from 10 am to 12:00 pm; RSVP at [www.mnwest.edu](http://www.mnwest.edu)

March 26, 28 – **Early Registration Event** for students planning to start in the fall of 2019; Canby Campus, Jackson Campus, or the Luverne Center – March 26; Granite Falls Campus, Pipestone Campus, Worthington Campus - March 28; More information and RSVP at [www.mnwest.edu](http://www.mnwest.edu)

April 12th – **Technology Day at the Jackson Campus** – Program Shadowing of Automotive Technology, Computer Science Technology, Cosmetology, Electrician, Powerline Technology, Power Sports Technology, and Welding – RSVP at [www.mnwest.edu](http://www.mnwest.edu)

## Campus Graduations

- Canby - May 16, 2019 at 7:00 p.m. at the Canby High School Gymnasium.
- Granite Falls - May 15, 2019 at 7:00 p.m. at the Yellow Medicine East High School Auditorium.
- Jackson - May 9, 2019 at 7:00 p.m. at the Jackson County Central Performing Arts Center.
- Pipestone & Luverne - May 14, 2019 at 7:00 p.m. at the Pipestone High School Gymnasium.
- Worthington - May 17, 2019 at 7:00 p.m. at the Minnesota West Center for Health and Wellness

## Join Our Board of Directors

We are Growing Our Team! We have openings for our Minnesota West Foundation Board of Directors!

### ***We are seeking individuals who:***

- Have a passion for our mission
- Will represent our college and our communities
- Are looking for an opportunity to give back and to help others do the same

For more information, please contact:  
**Michael Van Keulen, Executive Director**  
[michael.vankeulen@mnwest.edu](mailto:michael.vankeulen@mnwest.edu) • 507-223-1329

### **Foundation Board of Directors Job Description:**

The Foundation Board is composed of selected persons who represent positive leadership and influence and who have an interest and desire to assist the College through the Foundation Board. Board members are elected to three-year terms of office and have the following responsibilities.

- To provide leadership, develop policies, and help to set goals for the organization.

- To attend and actively participate in quarterly Foundation Board meetings, committee meetings, and special events.
- To assist in implementing various fundraising programs such as annual campaigns, capital campaigns, planned giving programs, donor recognition programs, special projects, and special events.
- To identify and assist in recruiting others who can effectively serve on the board.

## Itemizing Charitable Contributions on Tax Returns

As income tax return season moves into full swing, you are likely seeing the result of changes to the federal income tax laws enacted by the US Congress in late 2017. Among other changes, the standard deduction for single filers is now \$12,000 for single filers and \$24,000 for married couples filing jointly. For many filers, itemizing deductions such as home mortgage interest and charitable giving won't make as much sense.... unless you reside in Minnesota.

According to the Minnesota Council of Nonprofits, "Minnesota taxpayers who do not itemize deductions on their federal income tax

return may subtract a portion of their charitable contributions from their taxable income on their state return. Minnesota's charitable deduction, also known as the non-itemizer charitable deduction, provides a 50 percent tax deduction for total charitable contributions over \$500, which can include contributions to 501(c)(3) organizations that are not located in Minnesota." So, hold onto those receipts for the 2018 tax year. They can still come in handy for state income tax filing.

If you don't reside in Minnesota, be sure to research your state's rules around itemizing deductions.

## Alumni Updates

*What have you been up to? We would love to hear from you! Go to [www.mnwest.edu/profile-update](http://www.mnwest.edu/profile-update) and let us know!*

*Be sure to check us out on facebook at  [www.facebook.com/minnesotawest](http://www.facebook.com/minnesotawest) and post a selfie!*

### 1960s and 1970s

*Linda (Murphy) Cole (1966, Secretarial)* – Linda was part of the first graduating class from the newly opened Southwest Minnesota Vocational School in Jackson, MN. After graduation, she worked for John Morrell in Sioux Falls, SD, at the South Dakota State Capitol in Pierre, SD, then at Honeywell and General Mills in the Twin Cities. She and her husband Cliff now live in Charlotte, NC. She would love to reconnect with any of her classmates and can be reached at [clcole12013@aol.com](mailto:clcole12013@aol.com).

*Wayne Wyffels (1970, Plumbing)* – Wayne retired in February 2018 from the plumbing industry after 47 years. He owned and operated Wayne's Plumbing for the past 37 years. He & his wife Kathy live in Minneota, MN, and have three grown children.

*Todd Pack (1974, Liberal Arts)* – After a 30 year teaching career, Todd went on to work for Education Minnesota, where he has been since 2008. He is currently located in the St. Cloud, MN office. During his time at Worthington Community College, he participated in football, basketball, and baseball. Throughout his teaching career, he coached football, volleyball, basketball, baseball, and softball. He and his wife Debi live in St. Cloud.

### 1980s

*Kerri Holt (1984, Accounting)* – Kerri currently works for Caswell Cycle in Mora, MN. She and her husband Brad live in Brook Park, MN.

### 1990s

*Doug Zemler (1996, Electric Utility Substation Technology)* – Doug is the Program Coordinator for the Electrical Technology Program at Iowa Lakes Community College. He also teaches the Department of Labor Electrical Apprenticeship courses and Iowa Electrical Continuing Education courses. He lives in Spirit Lake, IA, with his wife Tammy and two daughters.

*Lisa Bents (1997, Liberal Arts/Human Services)* – After graduation, Lisa went on to complete her B.A.S. in Psychology from the University of Minnesota Duluth in 2001. Today she is the Program Director of the In-Home Family Support Program for the Duluth Regional Care Center. She lives in Lake Nebagamon, with Remington (her Husky), and three cats.

*Kyle Stumpf (1998, Electric Utility Substation Technology)* – Kyle works for EPC Services, an electrical utility project company. He lives in Gresham, OR.

### 2000s

*Neil Frodermann (2002, Liberal Arts)* – Neil was recently hired as the Plattsmouth, NE Public Works Director. Since 2004 Neil had worked for the Public Works Department in Fulda, MN, where he lived with his wife and three children.

*Karen Tvedt (2005, Nursing)* – Karen is currently the Director of Nursing at Sanford Medical Center in Chamberlain, SD.

### 2010s

*Michele Stein (2012, Medical Secretary)* – Michele works at Stevens Community Medical Center in Morris, MN as a ward secretary. She and her significant other Reed live in Chokio, MN.

*Jordan Behr (2013, Law Enforcement)* – Jordan was recently promoted to a full time deputy for the Jackson County, MN Sheriff's Office. He and his wife Edith live in Worthington with their two children, Zoraya and Mahteo.

*Parker Sandhurst (2013, Liberal Arts)* – Parker was recently hired as Communications Coordinator for Independent School District 518 in Worthington, MN. In his new role, he will be communicating with district employees, parents, students and district residents across a variety of messaging systems.

*Kara Honius (2014, Liberal Arts)* – Kara is currently enrolled in the University of South Dakota Occupational Therapy doctorate program, with a goal to complete her degree in 2020.

*Abdi Mohamed Nur (2016, Business Management)* – Abdi and his family live in Marshall, MN where he is a customer service manager at Walmart. His wife is a current Minnesota West student.

*Morgan LeBrun (2018, Nursing)* – Morgan is a Labor and Delivery Registered Nurse with Avera in Marshall, MN.

*Nery Garcia (2018, Law Enforcement)* – Nery was sworn in on November 5th as a new officer recruit with the Sioux Falls, SD Police Department.

*Nick Ahrens (2018, Liberal Arts)* – Nick is currently a student at the University of Nebraska at Kearney, where he transferred after playing football for Minnesota West. He is an Industrial Distribution major and also works as a drone camera operator for the university football team.

# Telescope Donation

Star gazing parties at Minnesota West could become a whole lot more exciting. A recent gift to the college of a 10-inch telescope from Grand Forks, ND resident Gregg Swanson, should help with that.

According to Minnesota West Math, Physics, and Astronomy instructor, Dr. Paul Seifert, he and Swanson are friends from their time in the Fargo-Moorhead astronomy club in Fargo, ND. When he moved from Fargo to Grand Forks, Swanson upgraded his personal telescope and observatory and decided to donate his current setup to his old friend. The telescope is a 10-inch Meade RCX400, completely automated and computer-controlled. It includes a SkyShed Pod observatory so that the entire unit can be stored outside.

The next step will be to find a permanent location on the Worthington campus for the telescope, build a concrete slab, and then install the observatory. "Until then," says Dr. Seifert, "I will just set up the telescope outside for student viewing sessions and public star parties."



1011 First Street West • Canby, MN 56220



Non-Profit Org  
US POSTAGE  
Paid Permit  
Slayton, MN  
Permit No. 22